



GREENWAY PARK

2455 NE Loop 410
San Antonio, Texas 78217

OFFICE/MEDICAL

Greenway Park is a 109,320 square foot, 3-story, multi-tenant office/medical property located in Northeast San Antonio now offering up to 3,267 rentable square feet.

HIGHLIGHTS

- Conveniently located on access road of Loop 410
- 3.4 per 1,000 SF parking
- Reserved covered parking available
- Minutes from San Antonio International Airport
- Efficient office layouts
- In close proximity to Northeast Baptist Hospital

AVAILABILITIES

- Suite 242: 2,042 RSF (Avail. Now)*
- Suite 245: 1,278 RSF (Avail. Now)
- Suite 247/249A: 3,267 RSF (Avail. Now)*

** (Suites 242 / 247/249A contiguous for total of 5,309 RSF)*

LEASE RATE

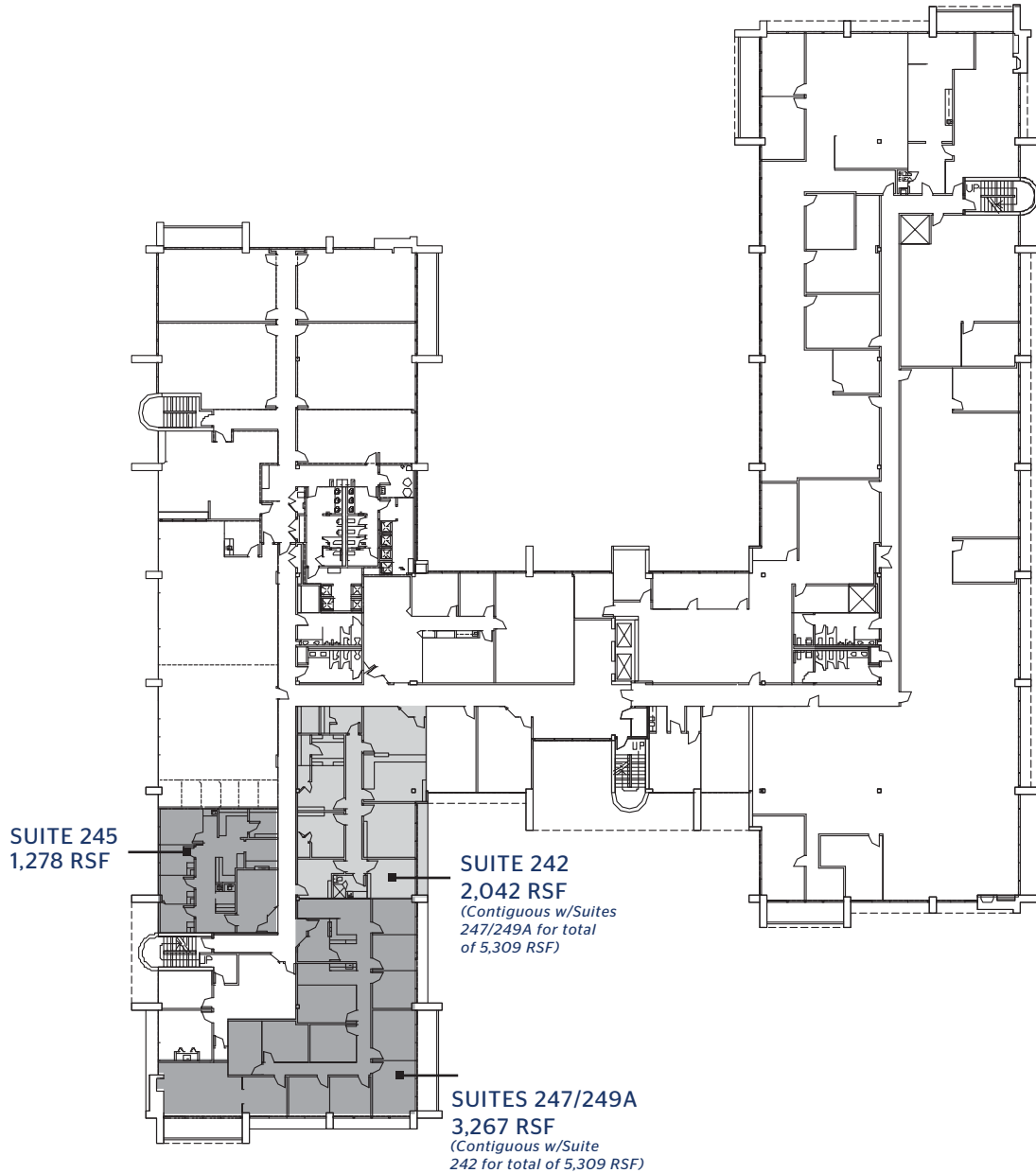
\$22.00/SF Full Service



PROUDLY LEASED BY



AVAILABILITIES



FOR INFORMATION, CONTACT:

Ryan Harrison, Brian Young or Garrett Carlson

210.930.3700

PROUDLY LEASED BY


STREAM